



Location
Innovation
Hub



Need for Location Data Space

22.11.2024

Antti Jakobsson

EDIH

European
Digital Innovation
Hubs Network



Co-funded by
the European Union

Why Location Data Space?

- There is a need for accessing reference data from European countries
- Interoperability can not be solved at the regional/national level fully
- Connecting national sources for each data space would be too complicated
- No solution at the moment how to deal with location data within EU data spaces



Location Europe as pre Location Data Space



DATA INTEROPERABILITY/DATA EXCHANGE

It is based on distributed data access (supports OGC APIs and WFS,WCS,WMS)



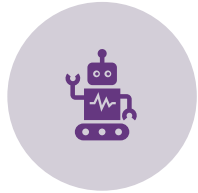
DATA INTEROPERABILITY/DATA MODELS

Based on INSPIRE simple schemas but national schemas may also be used



DATA VALUE CREATION

Supports data integration from multiple sources



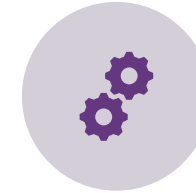
DATA INTEROPERABILITY

Provides interoperability assesement based on EIF, FAIR



DATA INTEROPERABILITY/DATA VALUE CREATION

Supports data quality provision (automated evaluation and dashboard) POC



DATA VALUE CREATION

Supports processing capabilities with HPC



DATA SOVEREIGNTY and TRUST

Security (API key)



DATA INTEROPERABILITY/DATA EXCHANGE

One API to connect



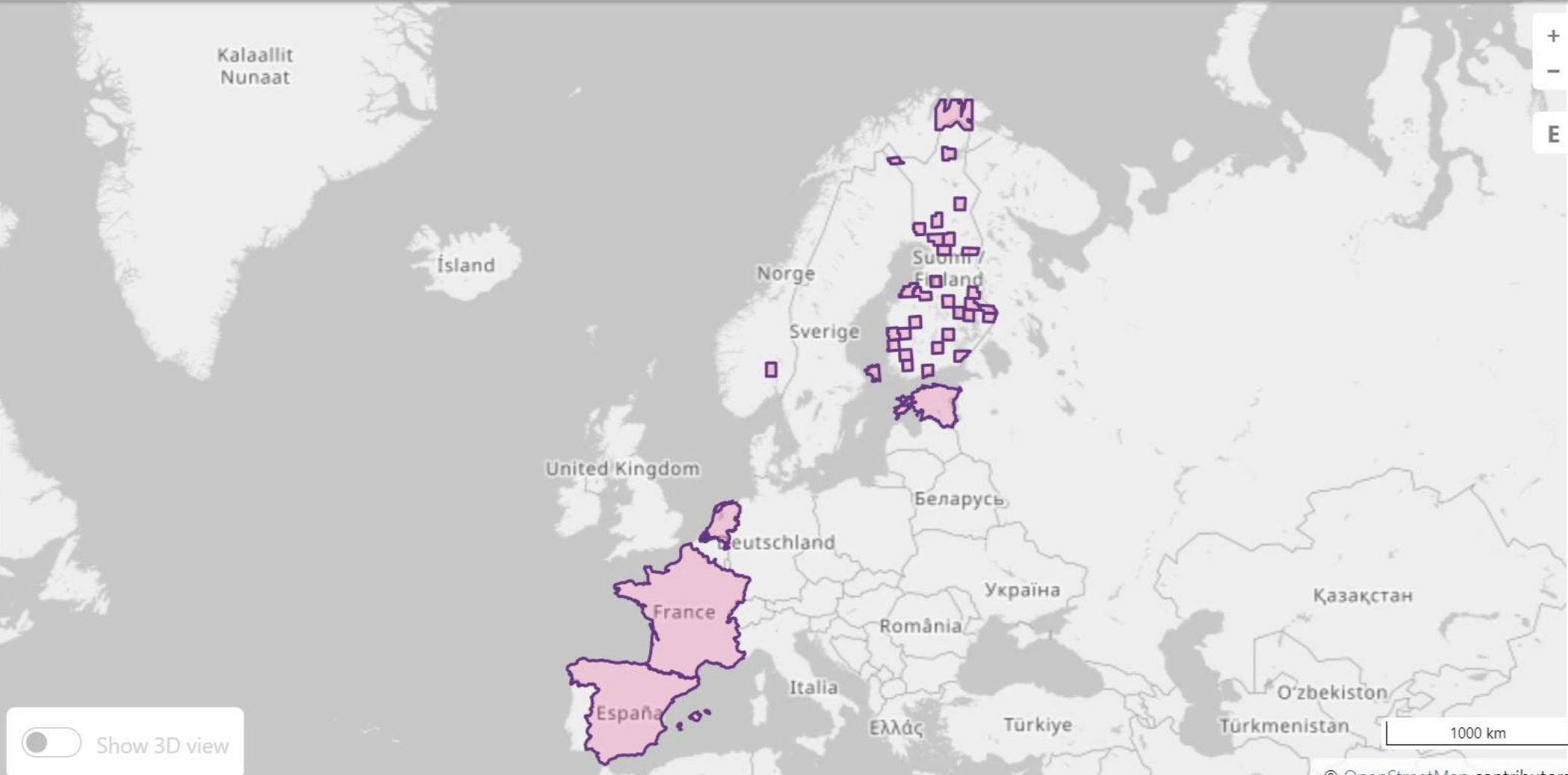
DATA VALUE CREATION

Metadata based on INSPIRE and European Data Portal

Data themes

Explore the geospatial data provided by our APIs. Each API corresponds to a specific data theme.

- Buildings 2D
- Buildings 3D
- Roads 2D
- Roads 3D
- Digital Terrain Model

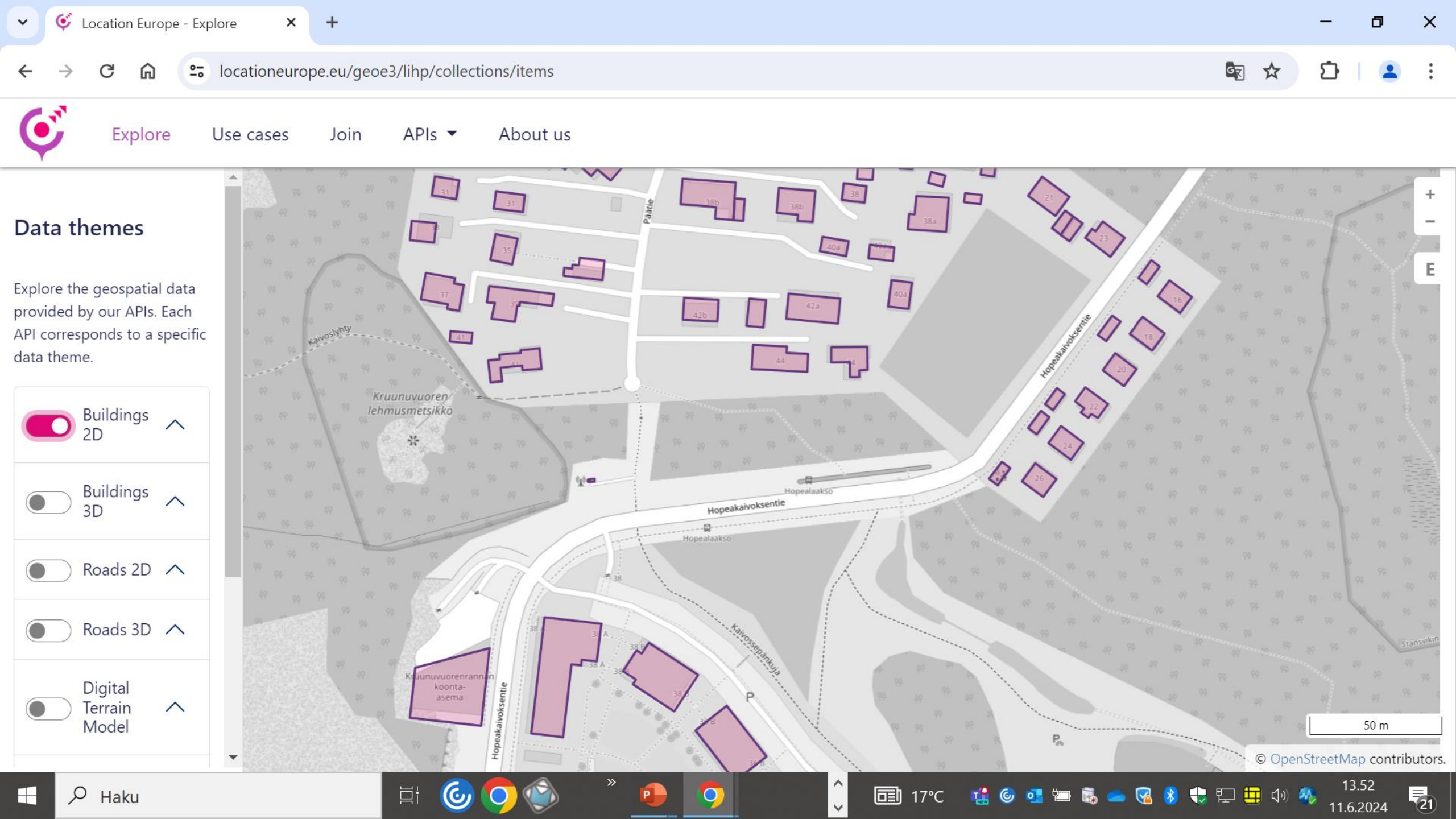


Data themes

Explore the geospatial data provided by our APIs. Each API corresponds to a specific data theme.

- Buildings 2D
- Buildings 3D
- Roads 2D
- Roads 3D
- Digital Terrain Model





Data themes

Explore the geospatial data provided by our APIs. Each API corresponds to a specific data theme.

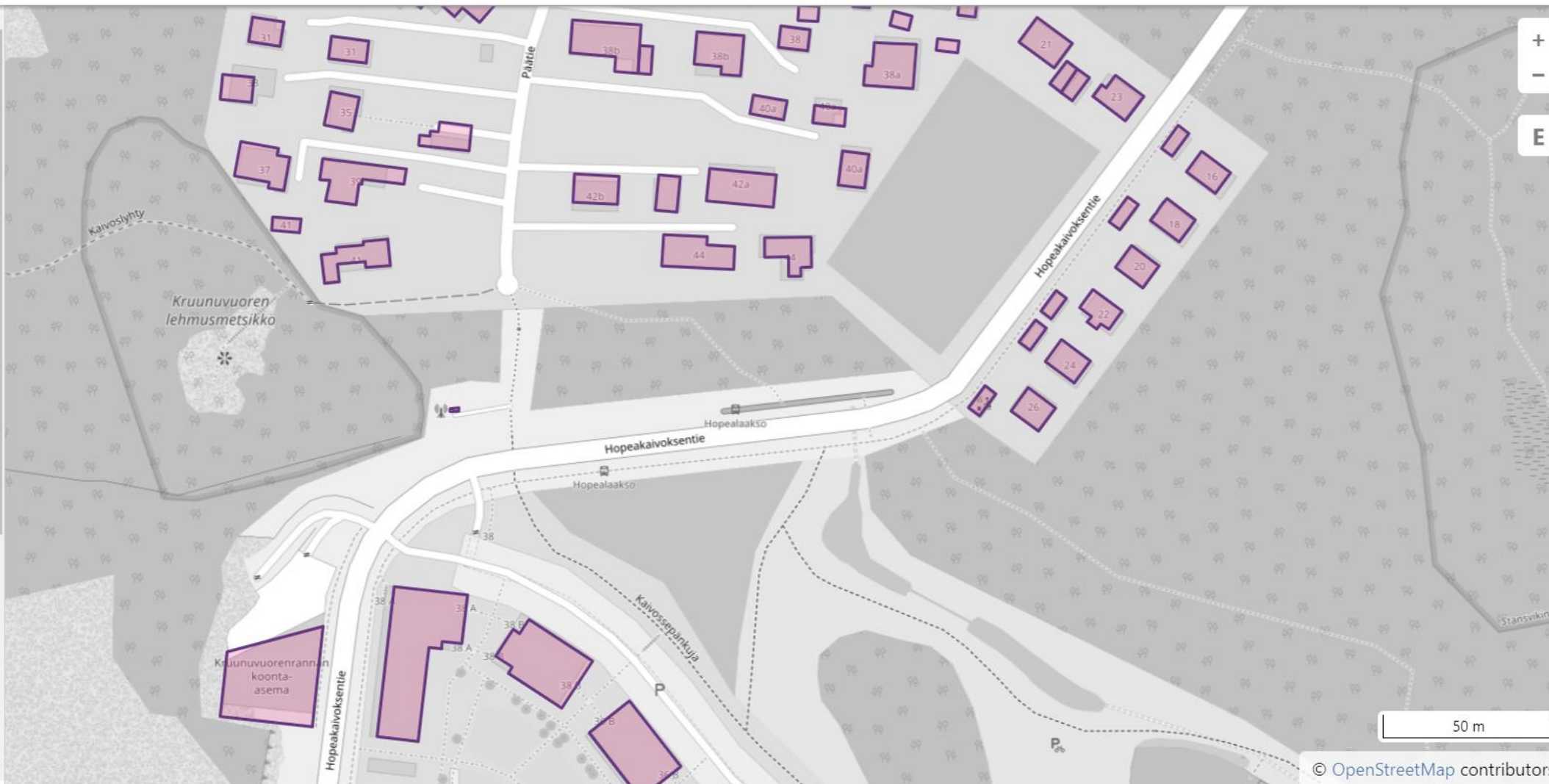
Buildings 2D

Buildings 3D

Roads 2D

Roads 3D

Digital Terrain Model



© OpenStreetMap contributors.

englanti suomi
Google Translate

Available information for an individual item in this collection.



footPrint
geometry2D_horizontalGeometryReference_href
<http://inspire.ec.europa.eu/codelist/HorizontalGeometryReferenceValue/footPrint>
sourceId
772585970
forecast_temperature
14.7
temperature
6.0
windspeed
6.4
sunshine_hours
1824

Data themes

Explore the geospatial data provided by our APIs. Each API corresponds to a specific data theme.

- Buildings 2D ^
- Buildings 3D ^
- Roads 2D ^
- Roads 3D ^
- Digital Terrain Model ^

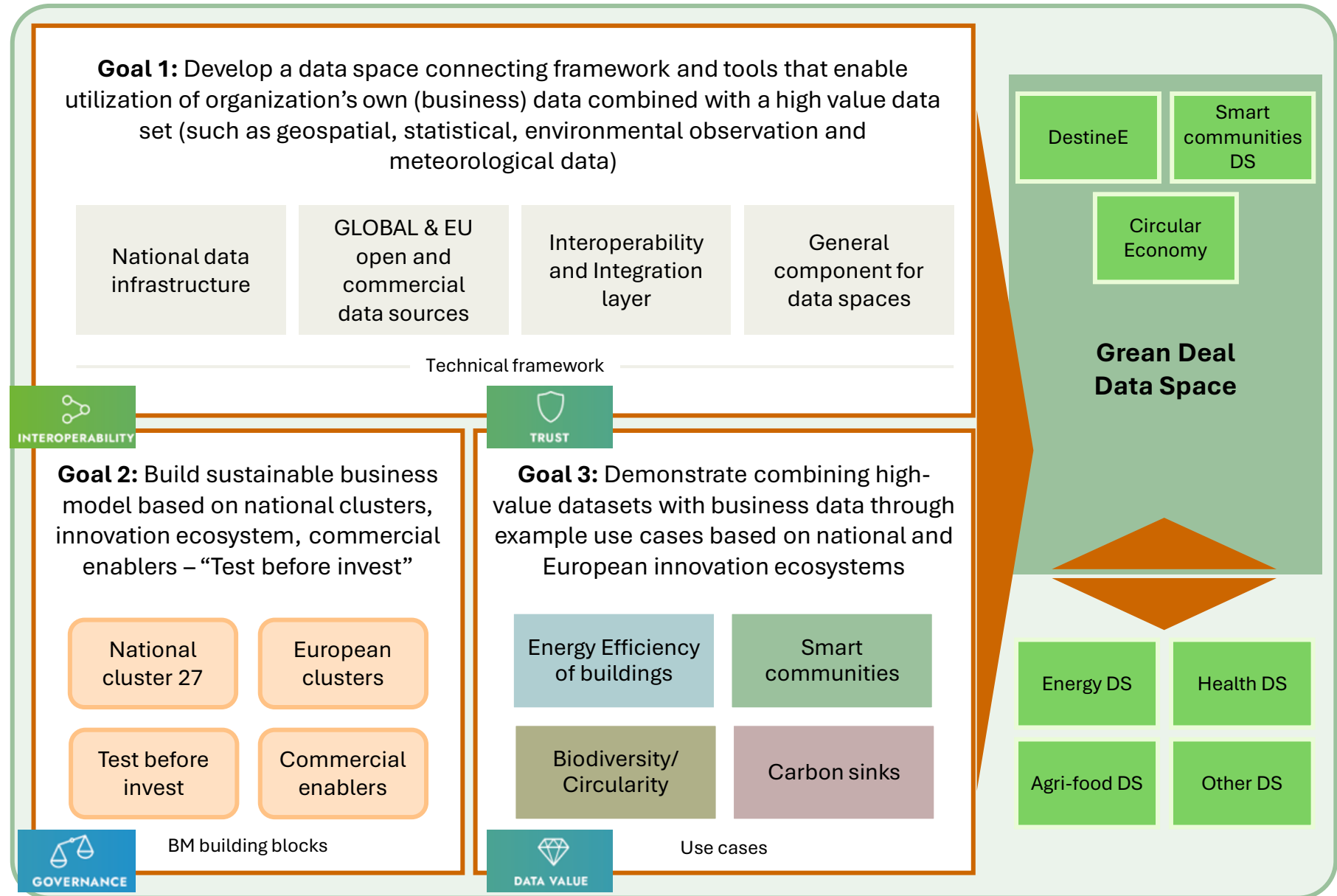
Show 3D view



Location Data Space for Europe - Project concept

Location Data Space for Europe – building on Location Europe Platform

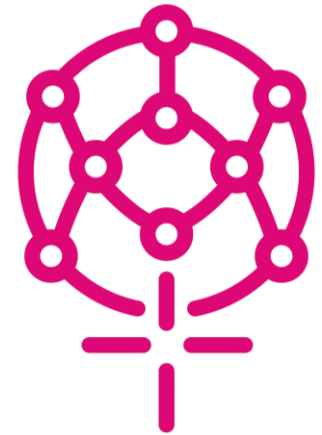
The purpose is to make **national location-based data services available as part of European data spaces**, thus enabling and driving the use of national high-value data sets needed for the European Green Deal in developing internationally **scalable, integrated digital services** for the European citizen



Want to learn more?



- Location Innovation Academy provides understanding of how this works - <https://academy.ogc.org/>
 - Most popular videos inside the academy OGC API Features
 - Short introduction to OGC APIs
 - How to implement OGC API Features by using pygeoapi
- Please join our Core Data Provider Network and provide you current data access for the Location Europe platform. <https://locationeurope.eu/geoe3/lihp/join>.
- Contact us if you want to start thinking of the use cases and test the platform for your users. Register for the testing the APIs <https://locationeurope.eu/geoe3/lihp/getapikey>



Coming soon: Location Finland

- Showcase and test before invest for interoperable location based services
- Test data for several themes
 - Built environment
 - Bioeconomy
- Urban test areas
- Other test areas like Agri, Drones etc.

