

A purple circular logo with the text "GISPO" in white, outlined letters. The background of the slide is a light gray map of a city grid.

GISPO

LIH training in 2024
10.4.2024

Who we are? What we do?

- Gispo Ltd. is a company that promotes the use of open source geospatial softwares and open data, founded in 2012.
- We offer...
 - consulting
 - software development
 - training
 - support
 - hosting & maintenance
- Get to know more about us at www.gispo.fi!



Open data? FOSS4G?

- Open data
 - National Land Survey of Finland (MML)
 - Finnish Environmental Institute (SYKE)
 - Avoindata.fi
 - OpenStreetMap
 - ... and an endless list of all the open data around the world!
- FOSS4G
 - Free and open source software for geospatial
 - QGIS (desktop GIS)
 - GeoServer (publish geospatial data)
 - PostGIS (manage geospatial data in a database)
 - Mergin Maps & QField (QGIS mobile apps)



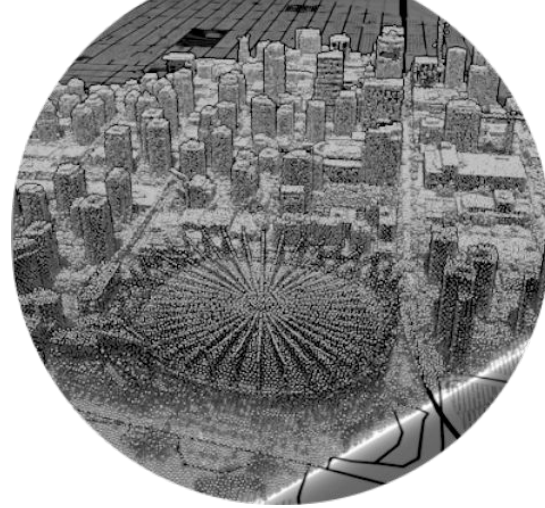
Our training in LIH

- Workshop or training customized for you
 - Choose the themes that interest you
 - What you have done before and what you would like to do?
- The scope:
 - from very general to very specific
 - from beginner to expert
- Always a teacher present
- LIH can be used for our open courses, too



Possible themes

- For beginners:
 - What are the possibilities of FOSS4G?
 - How to use QGIS?
 - How to find open datasets?
- For intermediate users:
 - How do I do X?
 - How to make interactive maps?
- For professional users:
 - Working with point cloud data
 - I have a specific problem with GI software X



Contact us!

- Order form in English:
 - <https://docs.google.com/forms/d/e/1FAIpQLSdCvvtkt0a3AKI8pxVkMFletxp71pnSKNdpcu6g7FcOynTy4g/viewform>
- Order form in Finnish:
 - https://docs.google.com/forms/d/e/1FAIpQLScH_hbOVr26SCBmSCVKVphcRPzcZnwq3PKW78hZBzvHSvHAwg/viewform
- Our courses for this spring (in Finnish):
 - <https://www.gispo.fi/koulutus/>

Thank you!

info@gispo.fi

+358 207 310 360

www.gispo.fi

Offices:

Helsinki

Turku

Joensuu

Tukholma

